



HULF TYPE

合掌造り

GASSHO ZUKURI



CAUTION

Read before assembly

1. This is an assembly model. Please read the assembling instructions carefully before beginning assembling.
2. Tear and discard the plastic bags contain parts after taking out the parts inside since the plastic bags may cause suffocation if small children place the bags over their head or swallow those.
3. Please sand the wood parts neatly with a sandpaper or the like, and dispose the wastes from polishing in a rubbish bin. Please be careful not to get injured, as they are easily broken.
4. Some parts have sharp edges. Please do not use them for any other purposes. Take extra cautions if you have small children.
5. Some parts are small. Please do not swallow them by mistake. Take extra cautions if you have small children. Accidental ingestion may cause suffocation.
6. You may need to use nippers, knives and files for assembly of parts. Careless handling may cause injuries by the tool edges. For children younger than 12 old, parents or a guardian must attend and carry out handling the tools.
7. Please pay attention to the following tips for using adhesives and paints:
 - Do not use them in an enclosed room. There is a danger of intoxication.
 - Never use them near the source of flame. There is a danger of ignition.
 - Do not put cement or paint in your mouth, eyes. If ingested or taken by mistake, please wash away with a large amount of water immediately and consult a doctor.*
8. Please note the parts are subject to change without prior notice.

List of parts

● Parts are laser-cut parts.

● Parts are the others.

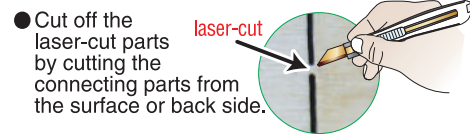
Part No	Name of parts	QTY	Part No	Other	Name of parts	QTY
1	Rear wall	1	12	Hemp cord		1
2	Wall, Roof material and others	1	13	Battery box		1
3	Fence, Foundation material	1	14	Miniature light bulb 2.5V		1
4	Roof board	1	15	Socket		1
5	Exterior wall material	1	16	Wall paper		2
6	Eaves board 4.5x10x52.5	1	17	Snow powder		1
7	Round bar φ2x40	3	18	Yellow ochre powder		1
8	Frame of the decoration base (Long)	1	19	Coniferous tree		2
9	Frame of the decoration base (Short)	2	20	Box tree (small)		1
10	Decoration base (Short) 3x59x178	1		Sandpaper		
11	Battery box cover	1 set				

* Tools, adhesives or paints necessary for assembly are not included. Please prepare by yourself.



Oya691 Suruga ward, Shizuoka, 422-8017

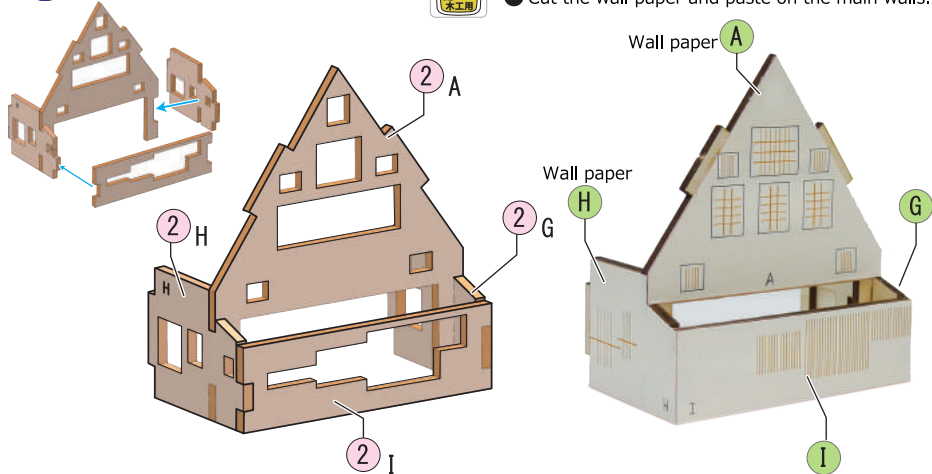
E-MAIL : info@woodyjoe.com



1 < Assemble main walls >



● Cut the wall paper and paste on the main walls.

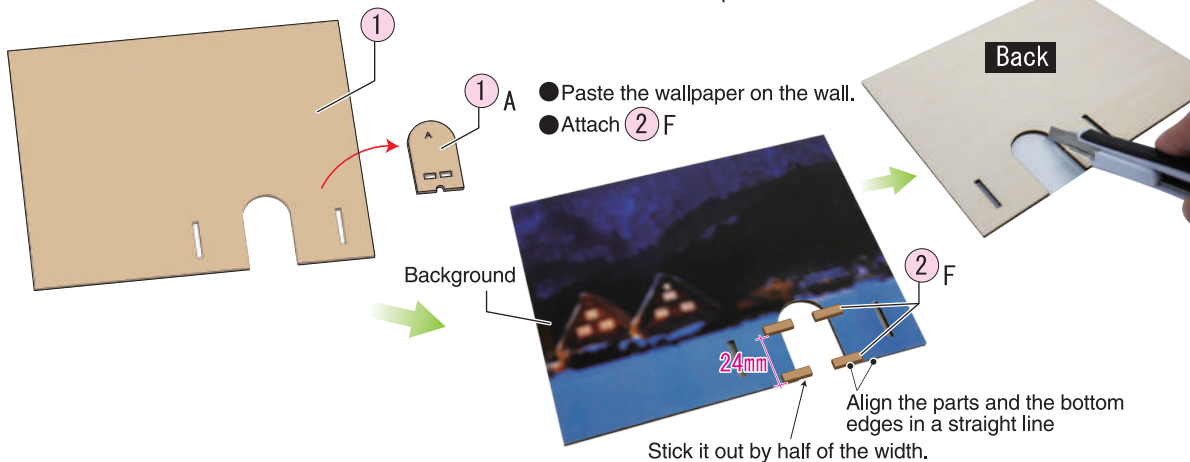


2 < Paste the wallpaper to the wall board >

● Remove 1 A From 1

Please keep the removed part carefully since it is used at the last step.

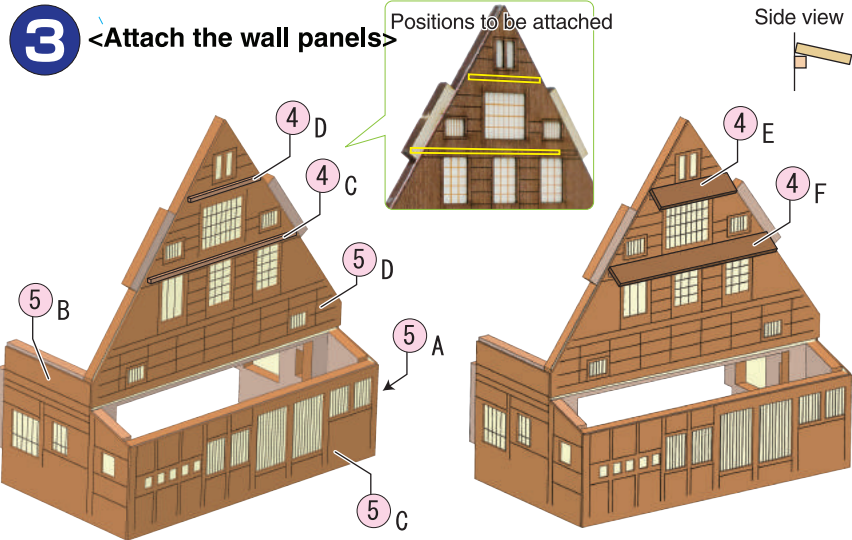
● Cut out from the back side.



3 < Attach the wall panels >

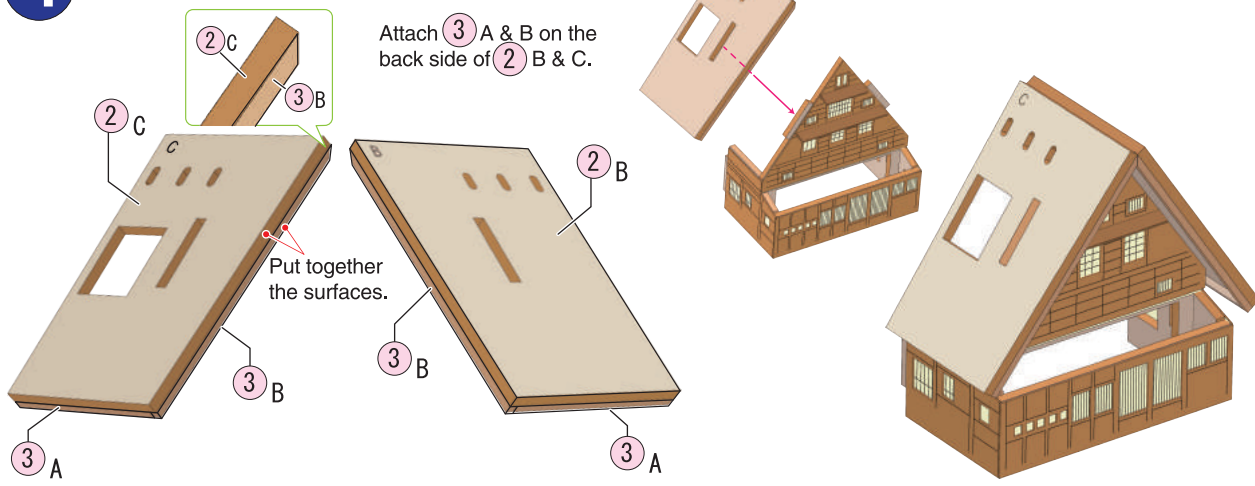
Positions to be attached

Side view

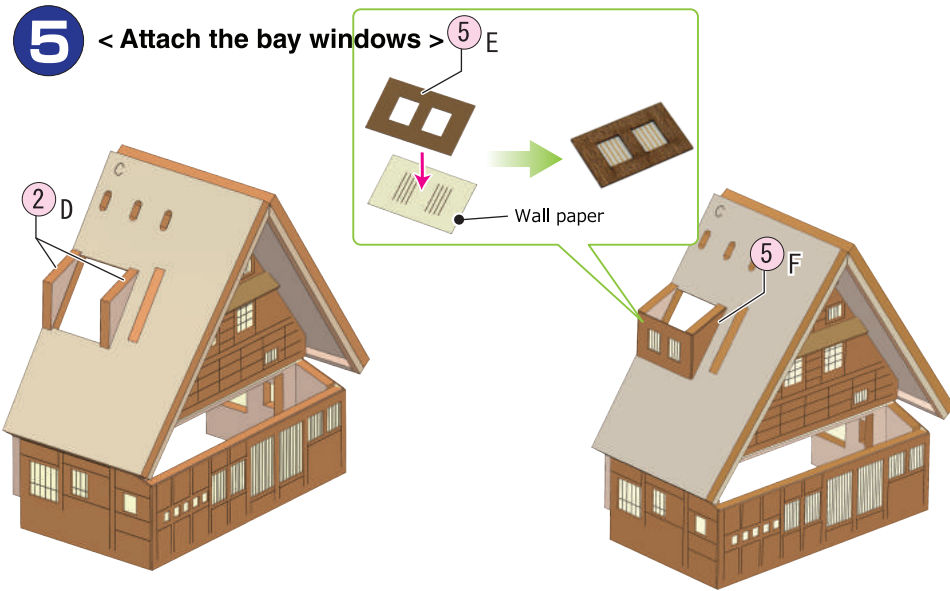


4 < Attach the roof panels >

Attach 3 A & B on the back side of 2 B & C.

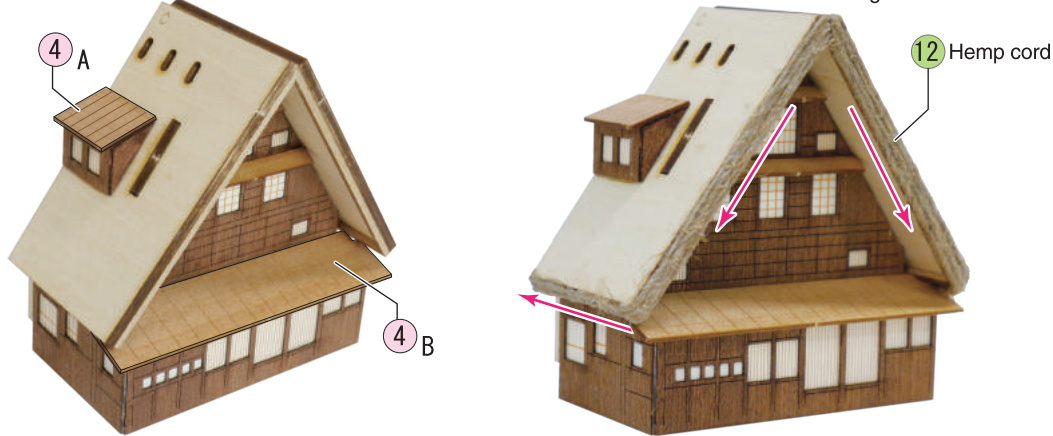


5 < Attach the bay windows >



6 < Attach the bay windows >

● Paste 3 to 4 pieces of hemp cord cut for attaching along the butt end of each roof plates from the center as the arrows navigate.



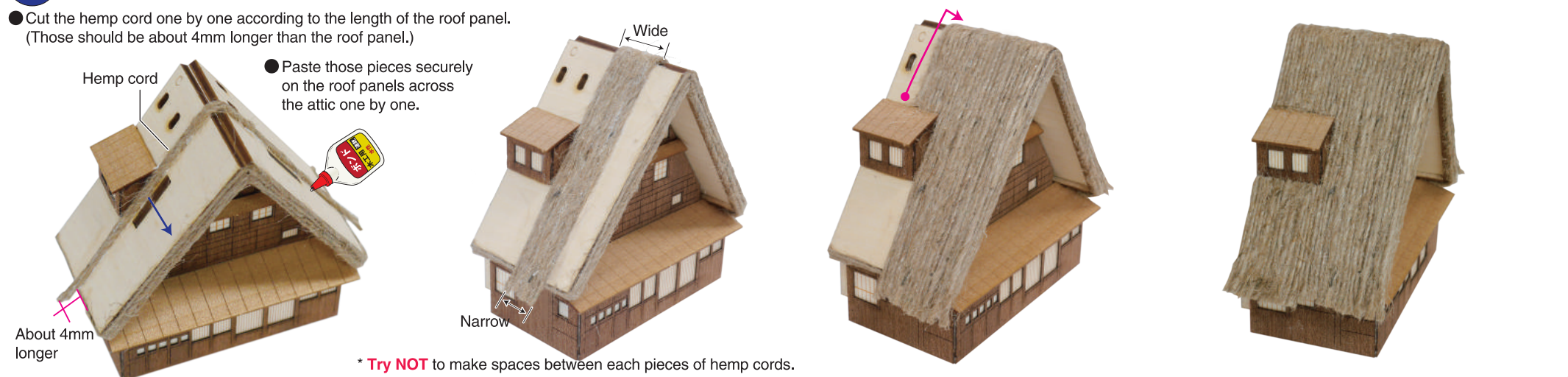
7 < Attach the thatched roof: 1 >

● Cut the hemp cord one by one according to the length of the roof panel. (Those should be about 4mm longer than the roof panel.)

● Paste those pieces securely on the roof panels across the attic one by one.

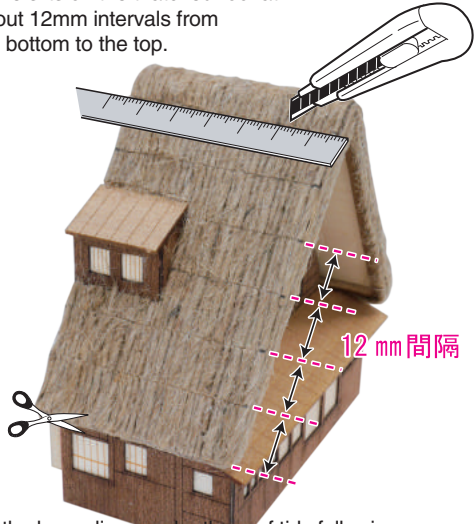
● Paste from the above of the bay window.

● Paste from the very below of the bay window.



8 < Attach the thatched roof: 2 >

- Make slits on the thatched roof at about 12mm intervals from the bottom to the top.



- Make the hemp lines under the roof tidy following the roof plate by cutting the exceeded parts of them.

- Lightly sand the bottom ends of those slits with sandpaper to fluff the surface. This tip is to add the natural texture of a thatched roof.

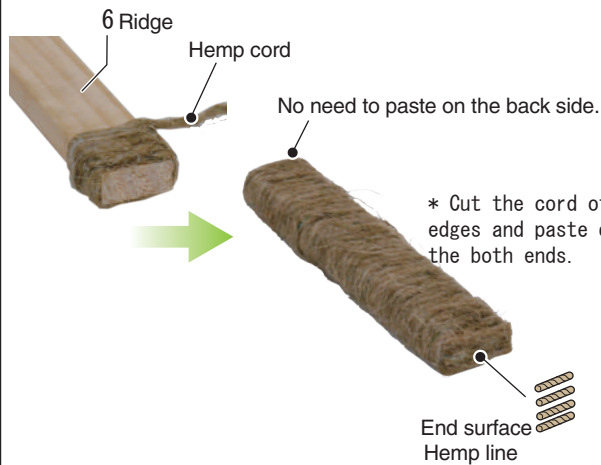


- Insert the round bars through the holes of roof panels with aligning them out equally to the right and left sides. Then adhere those parts. (Make several holes slightly bigger than the round bars from the backside with a toothpick or an eyelet in advance.)

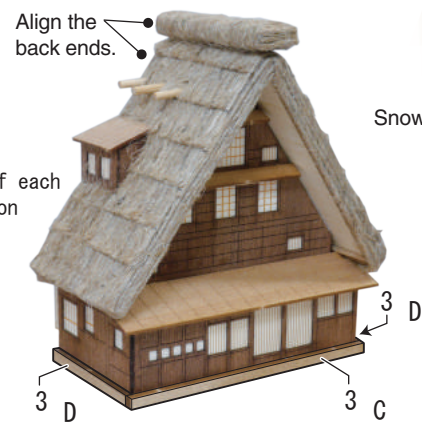


9 < Finish the roof >

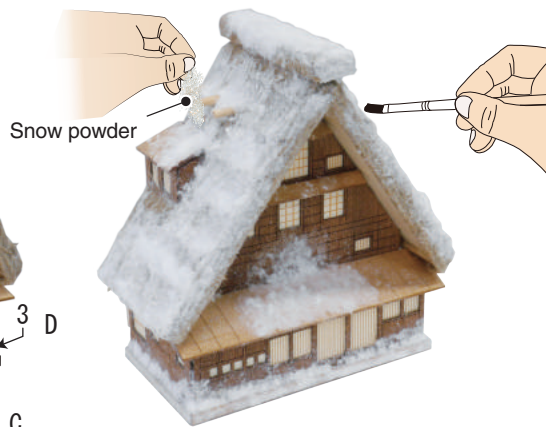
- Paste the hemp cord with coiling.



- Paste the ridge onto the center of the roof.



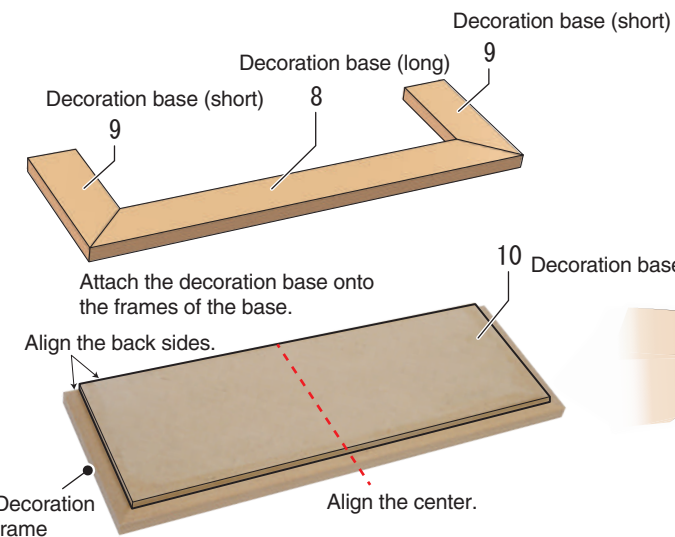
- Dilute woodworking bond by 1:2 to 3, and apply it with a brush on the roof where you want to put snow.
- Pinch the snow powders with fingers and press them on the roof to paste.



- Paste the assembled house to the wall.



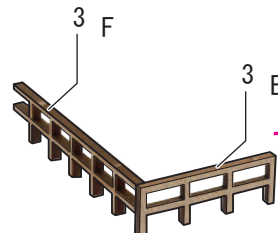
10 < Attach the decoration base >



- Paste the yellow ochre powder onto the floor plate. Spread the bond thinly on the floor and sprinkle the ochre powder.

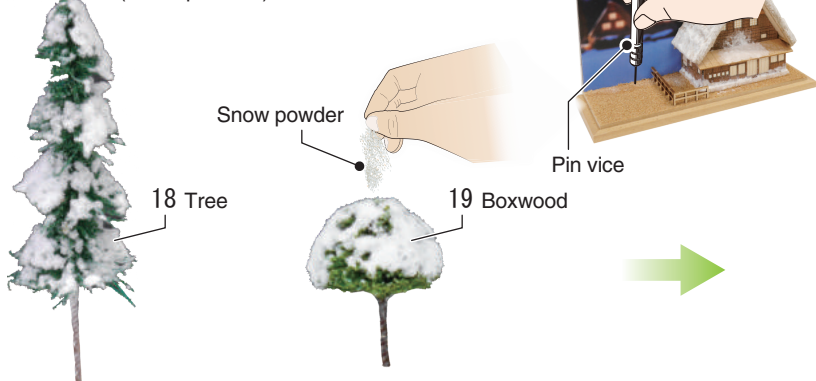


- Assemble and attach the fence. You can fix it on any location you would like.



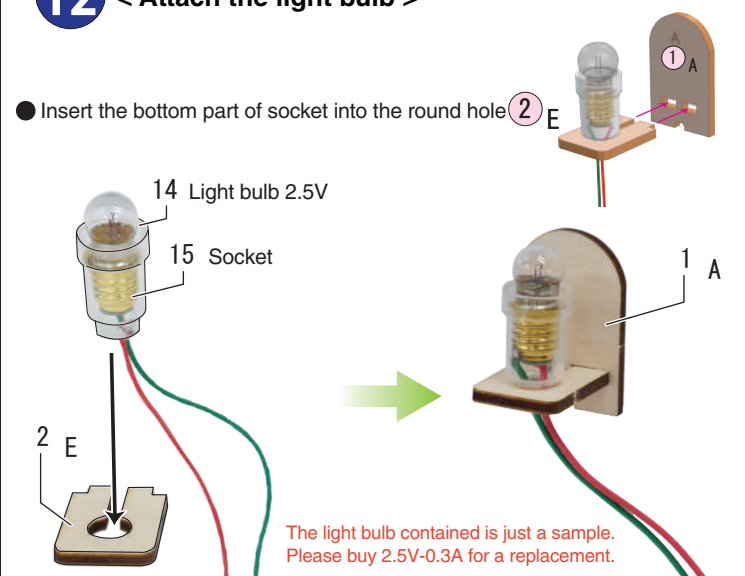
11 < Attach the trees >

- Paste the pinch of snow powder on the trees.
- Attach the trees onto any desired places. Make 1.5mm holes on the floor plate in advance. (Use a pin vice.)



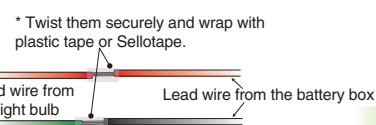
12 < Attach the light bulb >

- Insert the bottom part of socket into the round hole ② E

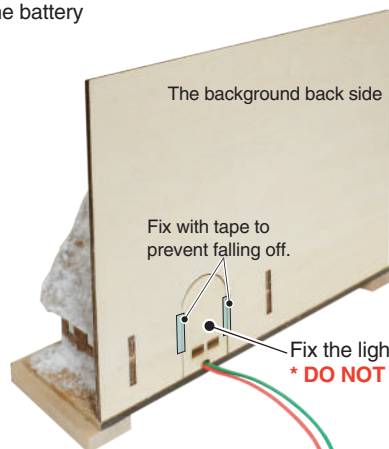
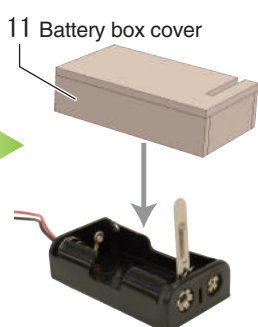


13 < Attach the battery box >

- Connect the lead wires of the light bulb and the battery box.



- Put 2 AA batteries, assemble the battery box cover and place it over.



[FINISH]

* Please limit the lighting up to 10 minutes per time. DO NOT leave the light on for more than 10 minutes.

